

T estpassport Q&A



La meilleure qualité le meilleur service

<http://www.testpassport.fr>

Service de mise à jour gratuit pendant un an

Exam : **156-915.76**

Title : Check Point Certified
Security Expert Update
Blade

Version : Demo

1.Which CLI tool helps on verifying proper ClusterXL sync?

- A. cphaprob stat
- B. fw stat
- C. fw ctl sync
- D. fw ctl pstat

Answer: D

2.The connection to the first ClusterXL member breaks. The first ClusterXL member leaves the cluster. Afterwards the switch admin set on port to second ClusterXL member to down.

What will happen?

- A. Second ClusterXL member still stays active as last member.
- B. Both ClusterXL members share load equally.
- C. Second ClusterXL member also left the cluster.
- D. First ClusterXL member is asked to come back to cluster.

Answer: A

3.Which command will only show the number of entries in the connection table?

- A. fw tab
- B. fw tab -t connections -s
- C. fw tab -t connections -u
- D. fw tab -t connections

Answer: B

4.Which statements about Management HA are correct?

- 1) Primary SmartCenter describes first installed SmartCenter
- 2) Active SmartCenter is always used to administrate with SmartConsole
- 3) Active SmartCenter describes first installed SmartCenter
- 4) Primary SmartCenter is always used to administrate with SmartConsole

- A. 1 and 2
- B. 3 and 4
- C. 2 and 3
- D. 1 and 4

Answer: A

5.Which process should you debug if SmartDashboard login fails?

- A. cpd
- B. fwm
- C. sdm
- D. fwd

Answer: B

6.Paul has just joined the MegaCorp security administration team. Natalie, the administrator, creates a new administrator account for Paul in SmartDashboard and installs the policy. When Paul tries to login it fails.

How can Natalie verify whether Paul's IP address is predefined on the security management server?

- A. Access the WEBUI on the Security Gateway, and verify whether Paul's IP address is listed as a GUI client.
- B. Login to Smart Dashboard, access Properties of the SMS, and verify whether Paul's IP address is listed.
- C. Login in to Smart Dashboard, access Global Properties, and select Security Management, to verify whether Paul's IP address is listed.
- D. Type cpconfig on the Management Server and select the option "GUI client List" to see if Paul's IP address is listed.

Answer: D

7. MultiCorp has bought company OmniCorp and now has two active AD domains.

How would you deploy Identity Awareness in this environment?

- A. Identity Awareness can only manage one AD domain.
- B. Only Captive Portal can be used.
- C. Only one ADquery is necessary to ask for all domains.
- D. You must run an ADquery for every domain.

Answer: D

8. Which of the following is the preferred method for adding static routes in Gaia?

- A. In the CLI via sysconfig
- B. In Web Portal, under Network Management > IPv4 Static Routes
- C. In the CLI with the command "route add"
- D. In SmartDashboard under Gateway Properties > Topology

Answer: B

9. Which command will erase all CRL's?

- A. vpn crl_zap
- B. vpn flush
- C. cpstop/cpstart
- D. vpn crladmin

Answer: A

10. Which component functions as the Internal Certificate Authority for R76?

- A. Security Gateway
- B. Management Server
- C. Policy Server
- D. SmartLSM

Answer: C

11. Control connections between the Security Management Server and the Gateway are not encrypted by the VPN Community. How are these connections secured?

- A. They are encrypted and authenticated using SIC.
- B. They are not encrypted, but are authenticated by the Gateway

- C. They are secured by PPTP
- D. They are not secured.

Answer: D

12.If Bob wanted to create a Management High Availability configuration, what is the minimum number of Security Management servers required in order to achieve his goal?

- A. Three
- B. Two
- C. Four
- D. One

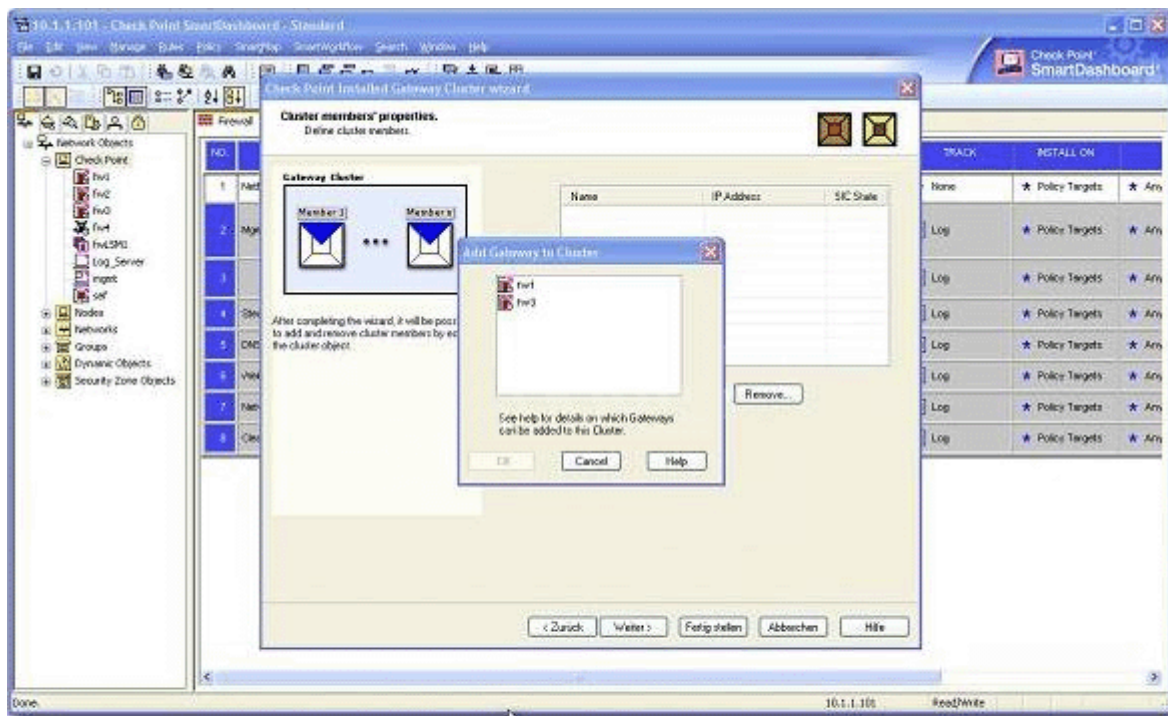
Answer: D

13.David wants to manage hundreds of gateways using a central management tool. What tool would David use to accomplish his goal?

- A. SmartProvisioning
- B. SmartBlade
- C. SmartDashboard
- D. SmartLSM

Answer: B

14.From the following output of cphaprob state, which ClusterXL mode is this?



- (i) fw2 is a member in a VPN community.
- (ii) ClusterXL software blade is not enabled on fw2.
- (iii) fw2 is a DAIP Gateway.

Mode	Configuration
A. Legacy mode High Availability	1. Every member of the cluster receives all packets sent to the cluster IP address, with the load distributed among all cluster members.
B. New mode High Availability	2. All machines may be active, based on a peak load algorithm. A failure of the active machine causes a failover to a cluster member bearing a lesser load.
C. Load Sharing Multicast mode	3. Provides a clustering mechanism through the use of cloned interface configuration details.
D. Load Sharing Unicast mode	4. One machine in the cluster receives all traffic from a router, and redistributes the packets to other machines in the cluster, implementing both Load Sharing and redundancy.
	5. Only one machine is active at any one time. A failure of the active machine causes a failover to the next highest priority machine in the cluster.

- A. New mode
- B. Multicast mode
- C. Legacy mode
- D. Unicast mode

Answer: D

15.Which of the following is NOT a feature of ClusterXL?

- A. Enhanced throughput in all ClusterXL modes (2 gateway cluster compared with 1 gateway)
- B. Transparent failover in case of device failures
- C. Zero downtime for mission-critical environments with State Synchronization
- D. Transparent upgrades

Answer: C

16.In which case is a Sticky Decision Function relevant?

- A. Load Sharing - Unicast
- B. Load Balancing - Forward
- C. High Availability
- D. Load Sharing - Multicast

Answer: C

17.You configure a Check Point QoS Rule Base with two rules: an HTTP rule with a weight of 40, and the Default Rule with a weight of 10.

If the only traffic passing through your QoS Module is HTTP traffic, what percent of bandwidth will be allocated to the HTTP traffic?

- A. 80%
- B. 40%
- C. 100%
- D. 50%

Answer: D

18.You have pushed a policy to your firewall and you are not able to access the firewall. What command will allow you to remove the current policy from the machine?

- A. fw purge policy
- B. fw fetch policy
- C. fw purge active
- D. fw unloadlocal

Answer: A

19.How do you verify the Check Point kernel running on a firewall?

- A. fw ctl get kernel
- B. fw ctl pstat
- C. fw kernel
- D. fw ver -k

Answer: B

20.Match the following commands to their correct function. Each command has one function only listed.

Command	Function
C1 <code>cp_admin_convert</code>	F1: export and import different revisions of the database.
C2 <code>cpca_client</code>	F2: export and import policy packages.
C3 <code>cp_merge</code>	F3: transfer Log data to an external database.
C4 <code>cpwd_admin</code>	F4: execute operations on the ICA.
	F5: invokes and monitors critical processes such as Check Point daemons on the local machine.
	F6: automatically export administrator definitions that were created in <code>cpconfig</code> to SmartDashboard.

- A. C1>F2; C2>F1; C3>F6; C4>F4
- B. C1>F4; C2>F6; C3>F3; C4>F2
- C. C1>F2; C2>F4; C3>F1; C4>F5
- D. C1>F6; C2>F4; C3>F2; C4>F5

Answer: D