

T estpassport Q&A



La meilleure qualité le meilleur service

<http://www.testpassport.fr>

Service de mise à jour gratuit pendant un an

Exam : 4A0-114

**Title : Nokia Border Gateway
Protocol Fundamentals for
Services**

Version : DEMO

1.Click the exhibit.



Which of the following is a valid confederation configuration for Router R2?

- ☐ A. R2>config>router# info

autonomous-system 65540
confederation 65540 members 65541 65542
- ☐ B. R2>config>router# info

autonomous-system 65542
confederation 65540 members 65541
- ☐ C. R2>config>router# info

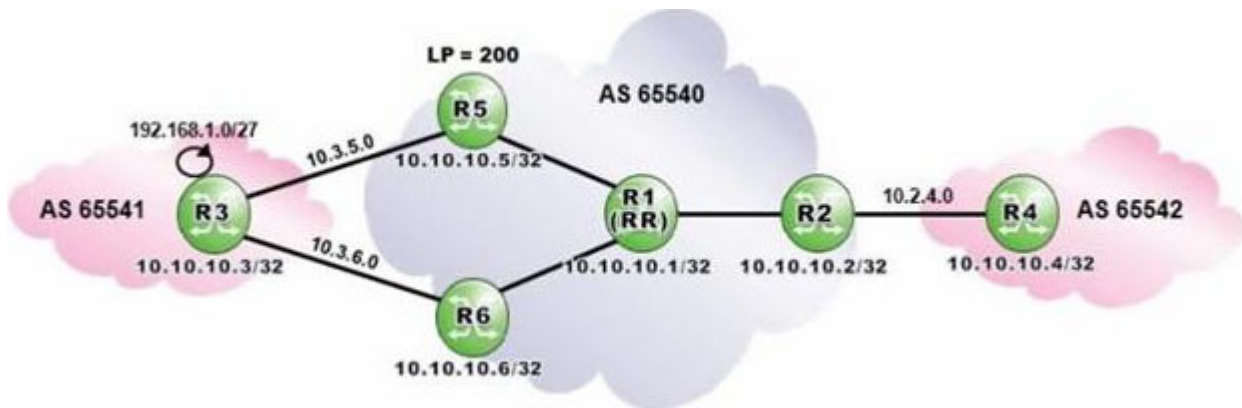
autonomous-system 65542
confederation 65540 members 65541 65542
- ☐ D. R2>config>router# info

autonomous-system 65540
confederation 65542 members 65541

- A. Option A
- B. Option B
- C. Option C
- D. Option D

Answer: C

2.Click the exhibit.



Router R1 is a route reflector with clients R2, R5 and R6. Prefixes advertised by router R5 have a local preference of 200. Router R3 advertises the prefix 192.168.1.0/27 to routers R5 and R6. Assuming that none of the routers in AS 65540 is configured with "advertise-external", what is the expected output of "show router bgp routes" on router R5?

A. Flag Network		LocalPref	MED
Nexthop	As-Path	Path-Id	VPNLabel
<hr/>			
u*>i	192.168.1.0/27	200	None
	10.3.5.3	None	-
	65541		
B. Flag Network		LocalPref	MED
Nexthop	As-Path	Path-Id	VPNLabel
<hr/>			
u*>i	192.168.1.0/27	None	None
	10.3.5.3	None	-
	65541		
i	192.168.1.0/27	200	None
	10.10.10.5	None	-
	65541		
i	192.168.1.0/27	100	None
	10.10.10.6	None	-
	65541		
C. Flag Network		LocalPref	MED
Nexthop	As-Path	Path-Id	VPNLabel
<hr/>			
u*>i	192.168.1.0/27	None	None
	10.3.5.3	None	-
	65541		
i	192.168.1.0/27	200	None
	10.10.10.5	None	-
	65541		
D. Flag Network		LocalPref	MED
Nexthop	As-Path	Path-Id	VPNLabel
<hr/>			
u*>i	192.168.1.0/27	200	None
	10.10.10.5	None	-
	65541		
i	192.168.1.0/27	100	None
	10.10.0.6	None	-
	65541		

A. Option A

B. Option B

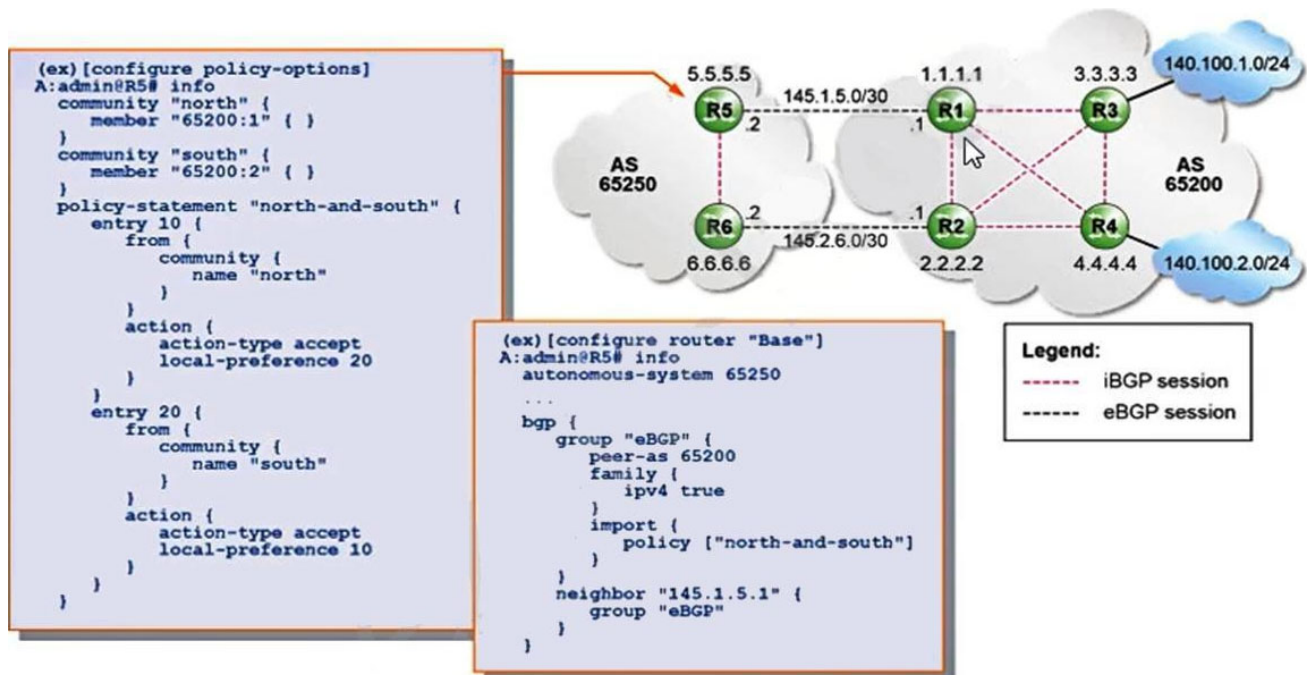
C. Option C

D. Option D

Answer: C

3. In the diagram, the BGP import policy "north-and-south" is applied to router R5. Router R1 advertises the prefix 140.100.1.0/24 with a community set to "65200:1".

Which of the following statements about how router R5 processes the received route update for prefix 140.100.1.0/24 is TRUE?



- A. The prefix is rejected.
- B. The prefix's local preference is set to 20.
- C. The prefix's community value is removed.
- D. The prefix's community value is modified to 65200:2.

Answer: D

4. Which of the following statements about BGP is FALSE?

- A. Peers need to be IP reachable to establish a BGP session.
- B. Route reflectors can reduce the number of iBGP sessions required.
- C. iBGP peers have to be adjacent to each other.
- D. The multihop parameter needs to be configured when eBGP peers are not adjacent to each other.

Answer: C

5. A BGP session is stuck in the "Connect" state.

Which of the following is the most likely reason?

- A. The remote BGP peer is properly configured but the local router is not.
- B. The local router is properly configured but the remote BGP peer is not.
- C. The BGP protocol is administratively disabled on the local router.
- D. The BGP protocol is administratively disabled on the remote BGP peer.

Answer: B