

# T estpassport Q&A



---

*La meilleure qualité le meilleur service*

<http://www.testpassport.fr>

Service de mise à jour gratuit pendant un an

**Exam** : **70-228**

**Title** : Installing, Configuring and  
Administering Microsoft SQL  
Server 2000, Enterprise  
Edition

**Version** : DEMO

1. You are the administrator of several SQL Server 2000 computers. You want to retrieve some information from an archived inventory database. You have a full tape backup of the database. The backup's header information shows that the backup uses the SQL\_Latin1\_General\_CP437\_BIN collation. However, all existing SQL Server computers in your office are configured to use the SQL\_Latin1\_General\_CP1\_CI\_AS collation. You do not want to join tables in the inventory database with tables in other databases. You need to restore the inventory database to a SQL Server 2000 computer by using the least amount of administrative effort. What should you do?

A. Use the rebuildm utility to rebuild the system databases on an existing SQL Server computer. Configure all the databases on that server to use the SQL\_Latin1\_General\_CP437\_BIN collation. Restore the inventory database to the server.

B. Restore the inventory database to an existing SQL Server computer. Accept the SQL\_Latin1\_General\_CP437\_BIN collation for that database.

C. Install a new named instance of SQL Server 2000 on an existing SQL Server 2000 computer. Configure the named instance to use the SQL\_Latin1\_General\_CP437\_BIN collation. Restore the inventory database to the named instance.

D. Install SQL Server 2000 on a new computer. Configure the new server to use the SQL\_Latin1\_General\_CP437\_BIN collation. Restore the inventory database to the new server.

Answer: B

2. You are the database administrator for a financial services company. Employees enter data 24 hours a day into a SQL Server 2000 database. These employees report slower response times when new account information is gathered from branch offices and added to the database. You currently use the following BULK INSERT statement to add the account information. BULK INSERT finance.dbo.customers FROM 'd:\bulk\accts143\_10142000.txt' WITH DATAFILETYPE = 'char', FIELDTERMINATOR = '\t', ROWTERMINATOR = '\n', TABLOCK You want to ensure that response times do not slow when new account information is added to the database. What should you do?

A. Drop the indexes for the Customers table before the data load, and then re-create the indexes after the data load is complete.

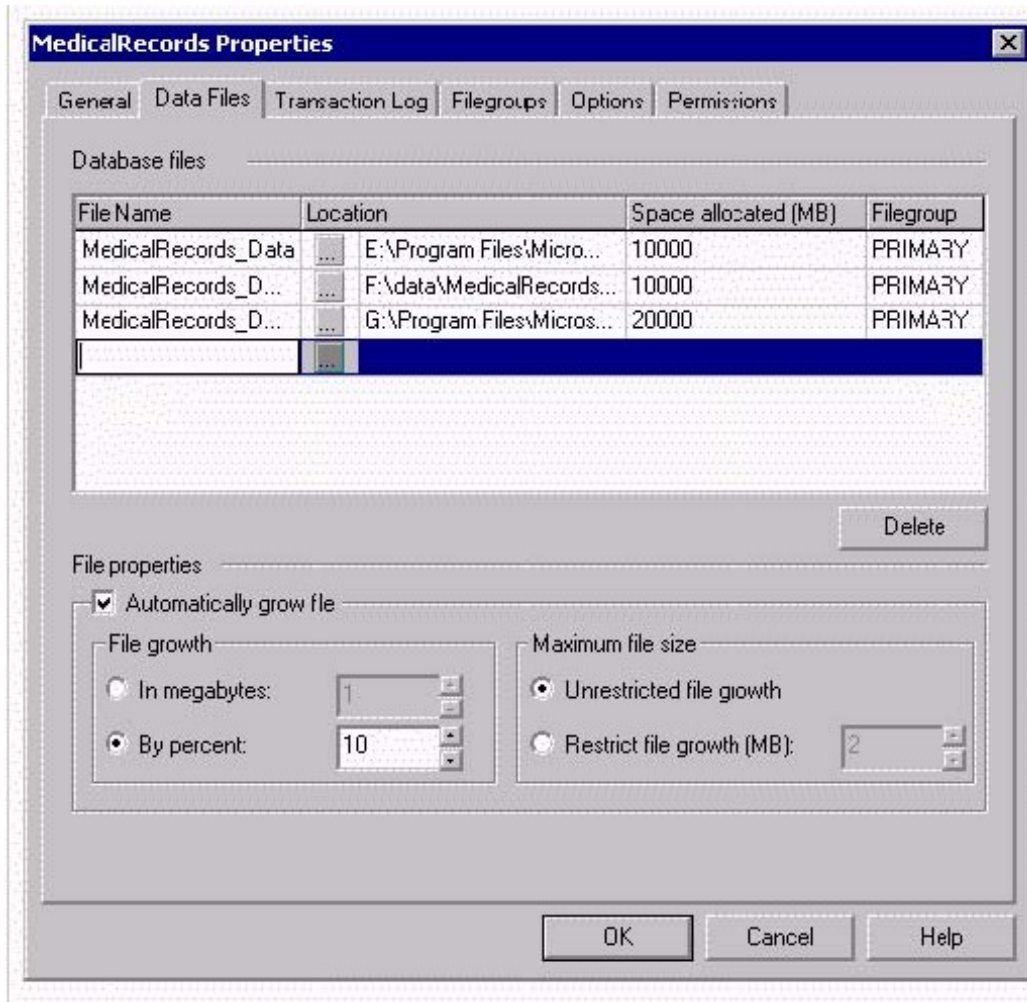
B. Remove the TABLOCK option from the BULK INSERT statement.

C. Add the BATCHSIZE option to the BULK INSERT statement, and then set the option equal to 10 percent of the number of rows to be loaded.

D. Add the ROWS\_PER\_BATCH option to the BULK INSERT statement, and then set the option equal to 10 percent of the number of rows to be loaded.

Answer: B 3. You are the administrator of a SQL Server 2000 computer. The server contains a database named MedicalRecords. This database contains clinical records and administrative records. The database consumes about 30 GB of disk space. The data files are configured as shown in the exhibit. (Click the Exhibit button.) You run full database backups each night after business hours. You notice that

the backup is not complete by the time the morning shift begins to use the database. You need to minimize the time needed to restore data in the event of a system failure. You also want to reconfigure the database to allow the backups to complete during the evening hours. Which two actions should you take? (Each correct Answer presents part of the solution. Choose two.)



- A. Reorganize the data files into two filegroups. Place the system tables in the PRIMARY filegroup and the user-defined tables in the other filegroup.
- B. Reorganize the data files into three filegroups. Place the system tables and shared objects in the PRIMARY filegroup, the clinical records in a filegroup, and the administrative records in a filegroup.
- C. Reorganize the data into three filegroups. Place the system tables in the PRIMARY filegroup, the indexes in a filegroup, and the tables in a filegroup.
- D. Back up the transaction log each night. Run a filegroup backup on a different filegroup each night.
- E. Back up the transaction log each night. Run a full backup of the database each weekend.

F. Back up the transaction log each night. Run a differential backup each Sunday, and run a full backup the first day of each month.

Answer: BD

4. You are the administrator of a SQL Server 2000 computer. The server contains a database named Sales that has two data files and one transaction log file. Each data file is located on its own hard disk and exists in its own filegroup. You perform full database, differential, and transaction log backups on a regular basis. All backups made during a single week are striped across three disk backup devices. A portion of the header information for the current week's backups is shown in the following table.

BackupName BackupType BackupFinishDate

```
sales_db_20000625 1 2000-06-25 21:57:04.000 sales_tl_20000626_1 2 2000-06-26 11:04:22.000
sales_tl_20000626_2 2 2000-06-26 15:06:33.000 sales_df_20000626 5 2000-06-26 21:15:48.000
sales_tl_20000627_1 2 2000-06-27 11:03:39.000 sales_tl_20000627_2 2 2000-06-27 15:04:59.000
sales_df_20000627 5 2000-06-27 21:31:13.000 sales_tl_20000628_1 2 2000-06-28 11:05:16.000
```

On June 28, 2000, at 1:47 P.M., the hard disk that contains the PRIMARY filegroup fails. You want to recover as much data as possible.

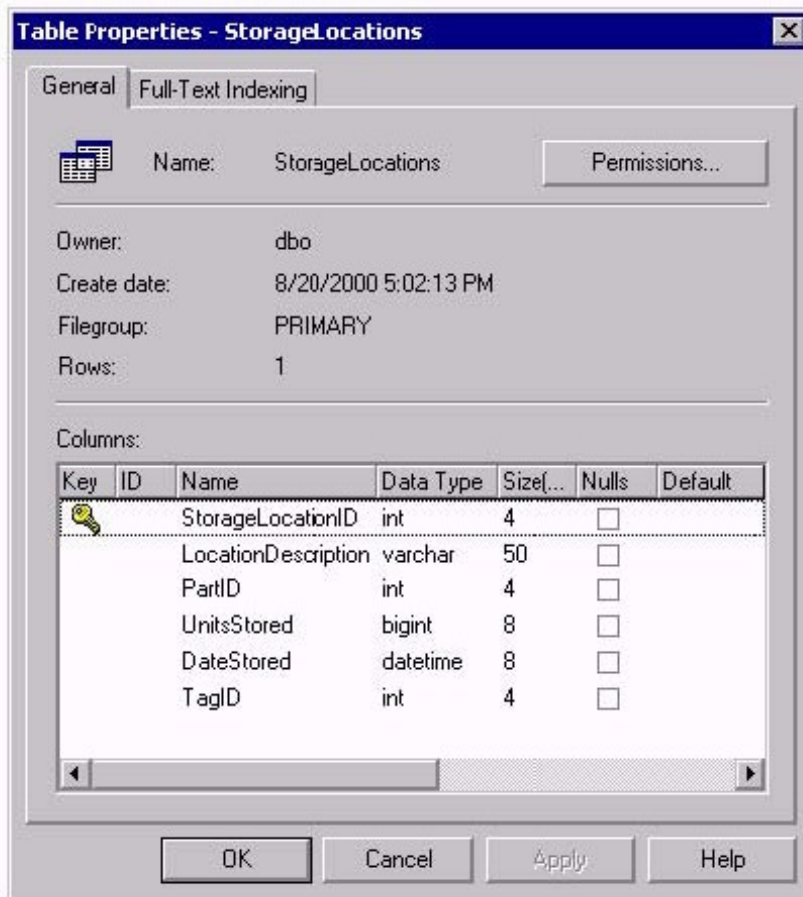
What should you do? (Each correct

Answer presents part of the solution. Choose all that apply.)

- A. Backup the transaction log by using the NO\_LOG option.
- B. Backup the transaction log by using the NO\_TRUNCATE option.
- C. Restore the most recent full database backup.
- D. Restore the most recent differential backup.
- E. Restore all differential backups in sequence.
- F. Restore all transaction log backups in sequence.
- G. Restore all transaction logs since the most recent differential backup.

Answer: BCDG

5. You are the administrator of a SQL Server 2000 computer. The server contains a database named Inventory. Users report that several storage locations in the UnitsStored field contain negative numbers. You examine the database's table structure. The table properties are configured as shown in the exhibit. (Click the Exhibit button.) You correct all the negative numbers in the table. You must prevent the database from storing negative numbers. You also want to minimize use of server resources and physical I/O. Which Transact-SQL statement should you execute?



A. ALTER TABLE dbo.StorageLocations ADD CONSTRAINT CK\_StorageLocations\_UnitsStored CHECK (UnitsStored >= 0)

B. CREATE TRIGGER CK\_UnitsStored On StorageLocations FOR INSERT, UPDATE AS IF INSERTED.UnitsStored < 0 ROLLBACK TRAN

C. CREATE RULE Ck\_UnitsStored As @Units >= 0 GO sp\_bindrule 'Ck\_UnitsStored', 'StorageLocations.UnitsStored' GO

D. CREATE PROC UpdateUnitsStored(@StorageLocationID int, @UnitsStored bigint) AS IF @UnitsStored < 0 RAISERROR (50099, 17) ELSE UPDATE StorageLocations SET UnitsStored = @UnitsStored WHERE StorageLocationID = @StorageLocationID

Answer: A 6. You are the administrator of a SQL Server 2000 computer. The server contains a database named Inventory. Users report that the following query responds slowly.

```
SELECT Parts.SKU AS SKU, Parts.Description AS [Part Description], Locations.Description AS
Location FROM PartsLocations INNER JOIN Parts ON PartsLocations.PartsID = Parts.PartsID INNER
JOIN Locations ON PartsLocations.LocationID = Locations.LocationID AND Parts.LocationID =
Locations.LocationID
```

You examine the indexes in the PartsLocations table. The indexes are configured as shown in the exhibit. (Click the Exhibit button.)

You also examine the contiguity of the table and receive the following results.

DBCC SHOWCONTIG scanning 'PartsLocations' table... Table: 'PartsLocations' (1); index ID: 1, database ID: 6 TABLE level scan performed.

- Pages Scanned.....: 3000
- Extents Scanned.....: 750
- Extent Switches.....: 502
  
- Avg. Pages per Extent.....: 4.0
  
- Scan Density [Best Count:Actual Count].....: 33.33% [1:3]
- Logical Scan Fragmentation .....: 33.33%
- Extent Scan Fragmentation .....: 33.33%
- Avg. Bytes Free per Page.....: 1166.0
- Avg. Page Density (full).....: 85.77%

- A. Rebuild the PK\_PartsLocations index.
- B. Rebuild the IX\_PartsLocations\_PartsID index.
- C. Rebuild the IX\_PartsLocations\_LocationID index.
- D. Create the IX\_PartsLocations\_PartsID\_LocationID index.

Answer: A

You need to improve the performance of the query. What should you do?

```
sp_helpindex 'PartsLocations'
```

index_name	index_description	index_keys
1 IX_PartsLocations_LocationID_FK	nonclustered located on PRIMARY	LocationID
2 IX_PartsLocations_PartsID_FK	nonclustered located on PRIMARY	PartsID
3 PK_PartsLocations	clustered, unique, primary ...	PartsID, LocationID

7. You are the administrator of a SQL Server 2000 computer. The server contains a database named Sales. You perform full database backups every two days. You also run regular database consistency checks on the server. The most recent check of the Sales database returns the following message. CHECKDB found 0 allocation errors and 3 consistency errors in table 'Orders' (object ID 214575782). You want to correct the data integrity errors while minimizing the amount of data lost. What should you do?

- A. Disconnect users from the Sales database. Enable the single user database option. Execute the DBCC CHECKTABLE statement for the Orders table, and specify the REPAIR\_REBUILD option.
- B. Disconnect users from the Sales database. Enable the dbo use only database option. Execute the DBCC CHECKALLOC statement for the Orders table, and specify the REPAIR\_REBUILD option.
- C. Disconnect users from the Sales database. Execute the RESTORE DATABASE statement for the Sales database.
- D. Execute the DBCC CLEAN TABLE statement for the Orders table.
- E. Execute the sp\_table\_validation stored procedure for the Orders table.

Answer: A

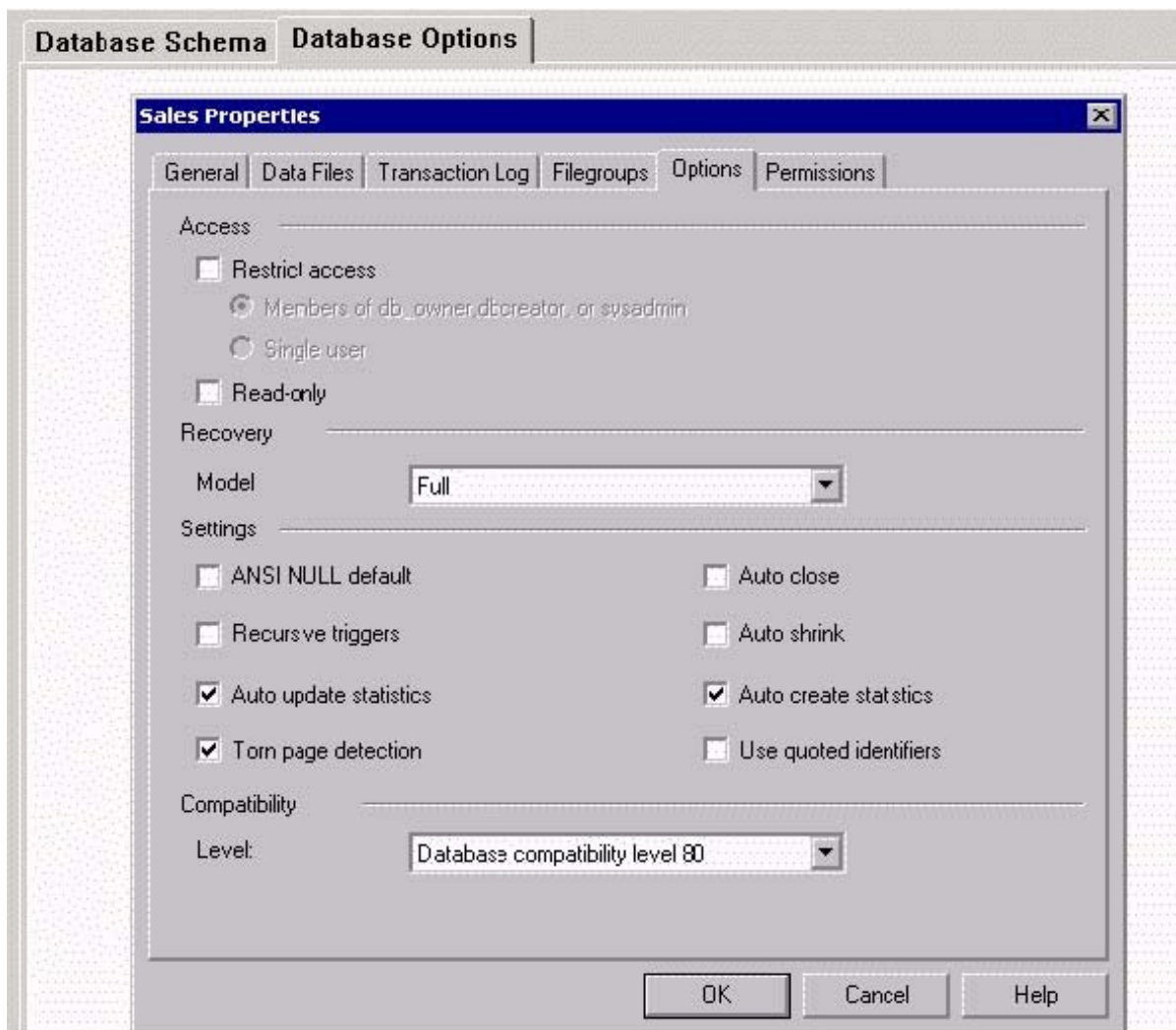
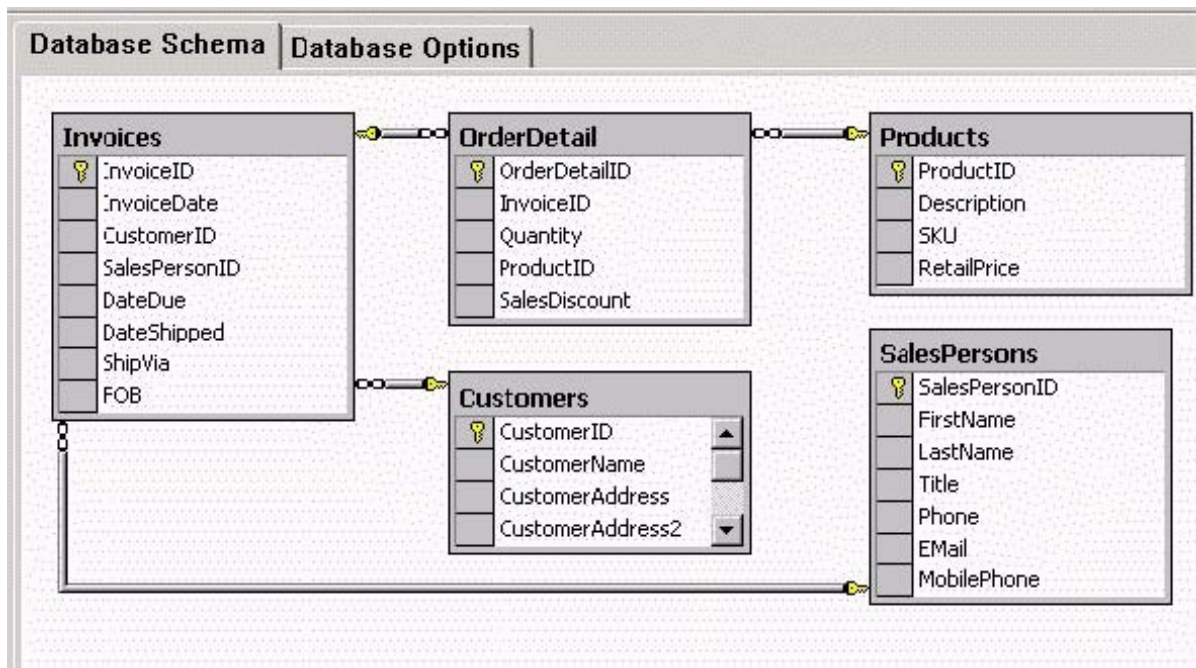
8. You are the database administrator of a SQL Server 2000 computer. The server contains your company's Accounts database. Hundreds of users access the database each day. Because you have had power interruptions in the past, you want to protect the physical integrity of the Accounts database. You do not want to slow down server operations. What should you do?

- A. Enable the torn page detection database option for each database.
- B. Disable write caching on all disk controllers.
- C. Ensure that write caching disk controllers have battery backups.
- D. Create a database maintenance plan to check database integrity and make repairs each night.

Answer: C

9. You are the administrator of a SQL Server 2000 computer. The server contains a database named Sales. The database is configured as shown in the Database Schema exhibit. (Click the Exhibit button.) In the last six months, the database has grown by 4 GB. Users report that query response time has slowed. The options set on the database are shown in the Database Options exhibit. (Click the Exhibit button.) You want to accelerate query response time. What should you do?





- A. Update the database statistics.
- B. Add indexes to the foreign key fields.
- C. Truncate the transaction log.
- D. Run the Database Maintenance Plan Wizard.
- E. Drop primary keys from all tables.

Answer: B

10. You are the administrator of two SQL Server 2000 computers. Each server contains data for one of your company's two regional divisions. Company employees currently use a single data entry application. Your company installs an additional data entry application on client computers. After the new application is installed, query response times slow. You want to monitor server traffic during business hours to help diagnose this problem. What should you do?

- A. Run SQL Profiler, and create one trace to monitor both servers. Configure the trace to include data from the new data entry application only.
- B. Run two instances of SQL Profiler, and create a trace to monitor each server. Configure the traces to include data from both data entry applications.
- C. Run the sqldiag utility from a command prompt. Write diagnostic data to a text file.
- D. Execute the sp\_monitor stored procedure. Save the output to a text file.

Answer: B

11. You are the administrator of three SQL Server 2000 computers at Five Lakes Publishing. One server, FLPSQL01, stores order data. You want to be able to use the other two servers, FLPSQL02 and FLPSQL03, to

Answer queries and run reports. The planned network configuration is shown in the exhibit. (Click the Exhibit button.) You want to use the Database Maintenance Plan Wizard to configure log shipping from FLPSQL01 to FLPSQL02 and FLPSQL03. You do not want users to add any new data on FLPSQL02 or FLPSQL03, but they must be able to run queries and reports. Which two actions should you take? (Each correct

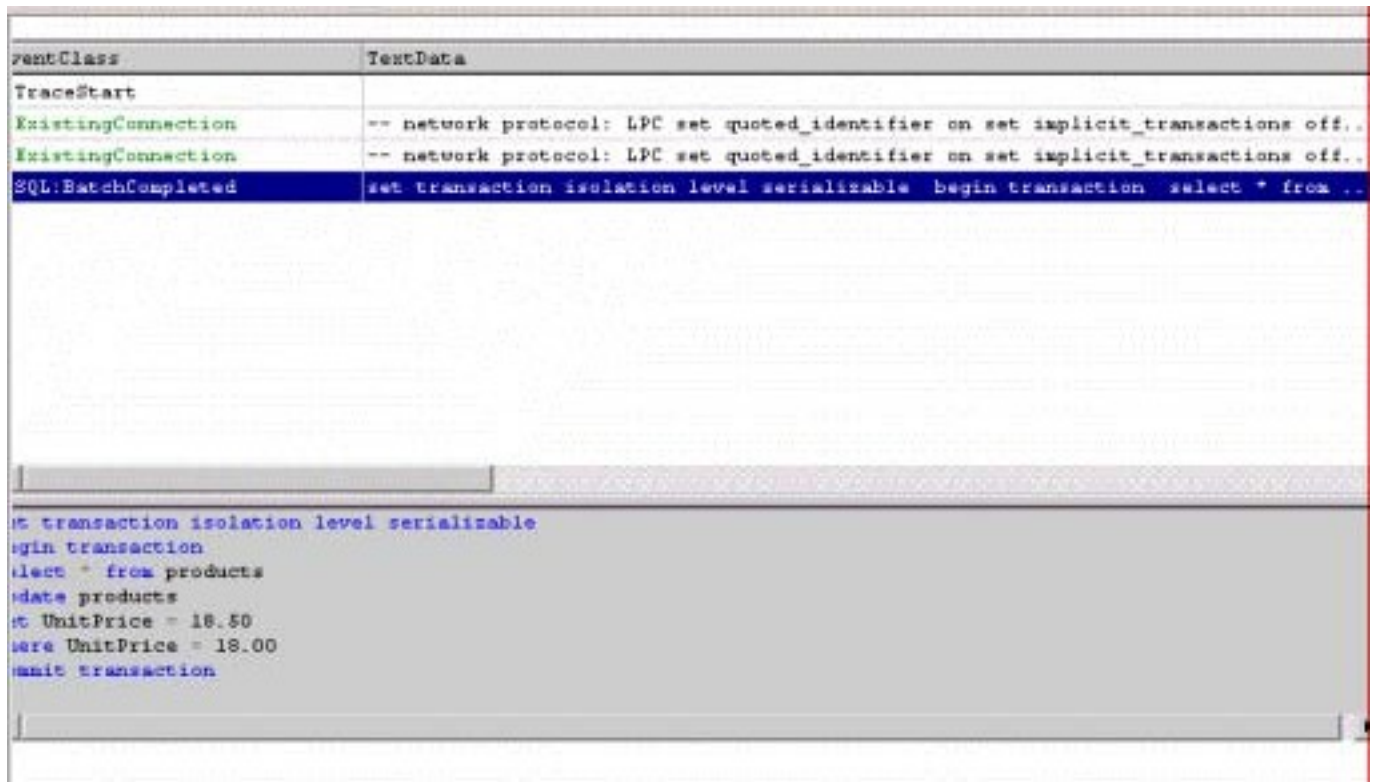
Answer presents part of the solution. Choose two.)

- A. Set the database load state for each destination server to No recovery mode.
- B. Set the database load state for each destination server to Standby mode.
- C. Enable the Allow database to assume primary role option for both destination servers.
- D. Enable the Allow database to assume primary role option for one destination server, and then disable this option for the other destination server.

E. Disable the Allow database to assume primary role option for both destination servers.

Answer: BE

12. You are the administrator of a SQL Server 2000 computer. The server contains a database named Sales. Pierre reports that he cannot modify data in the database. You use SQL Profiler to capture his activities as shown in the exhibit. (Click the Exhibit button.) You want Pierre to be able to modify data. You also want the Transact-SQL statement to execute without compromising data integrity. What are two possible ways to achieve this goal? (Each correct Answer presents a complete solution. Choose two.)

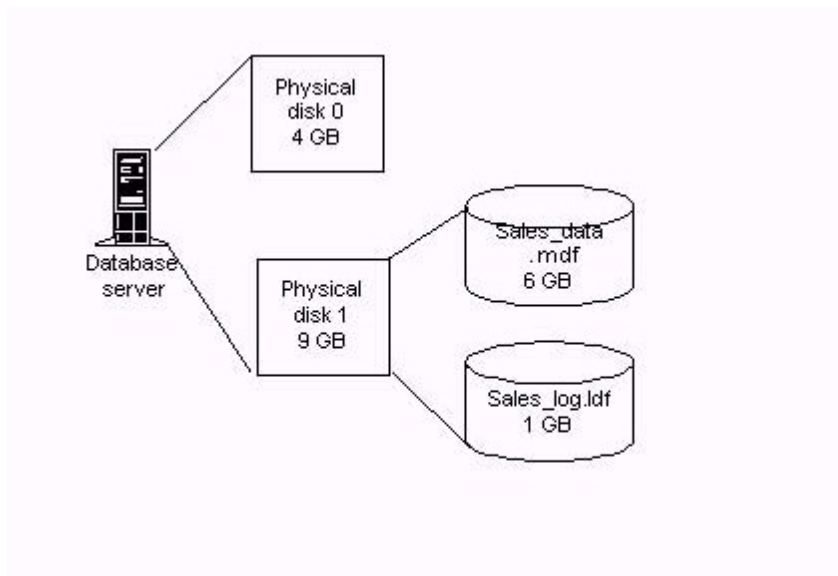


- A. Change the isolation level of the database connection.
- B. Add indexes to the Products table.
- C. Remove the explicit transaction from the Transact-SQL batch.
- D. Create a stored procedure to execute the Transact-SQL batch.
- E. Add a cascading UPDATE trigger to the Products table.

Answer: AC

13. You are the administrator of a Microsoft Windows 2000 Advanced Server computer. The server is also running SQL Server 2000 and contains a database named Sales. The server is configured as shown in the exhibit. (Click the Exhibit button.) The Sales database is configured by using the default options and increases by 50 MB per day. You want an operator to be notified automatically before the database runs

out of disk space. You also want to minimize the amount of administrative overhead necessary for this database. What should you do?



- A. Configure System Monitor to log an alert if the hard disk contains less than 600 MB of free space. Configure SQL Server Agent to send an e-mail message notifying the operator of the System Monitor alert.
- B. Create a SQL Server Agent job that uses the `sp_spaceused` stored procedure each morning. Place the results of the stored procedure in an e-mail message and use SQL Mail to send the results to the operator.
- C. Set the `MaxSize` property of `Sales_data.mdf` to 7.5 GB and the `MaxSize` property of `Sales_log.ldf` to 1.5 GB. Configure SQL Server Agent to send an e-mail message to an operator when the data file and the transaction log have reached these limits.
- D. Use Microsoft Windows Explorer to verify the available space on the hard disk each morning. Execute the `sp_spaceused` stored procedure each morning.

Answer: A

14. You are the administrator of a Microsoft Windows NT Server 4.0 computer. The server is the PDC in your domain and also runs SQL Server 2000. The server has four processors and 1 GB of RAM. Your network consists of 500 client computers that are running Microsoft Windows Millennium Edition. Users report that when they log on in the morning their computers respond slowly and occasionally return error messages. You use System Monitor to monitor processor performance and RAM utilization. You discover that the % Total Time and % User Time counters average 90 percent and the % Privileged Time counter averages 20 percent. The Available Mbytes counter averages 800 MB. You need to improve server performance for user logons. What should you do?

- A. Increase the physical RAM on the computer to 2 GB.

- B. Increase the virtual RAM on the computer to 4 GB.
- C. Configure SQL Server to use only processors 1, 2, and 3.
- D. Configure SQL Server to use only processors 0, 1, and 2.

Answer: C

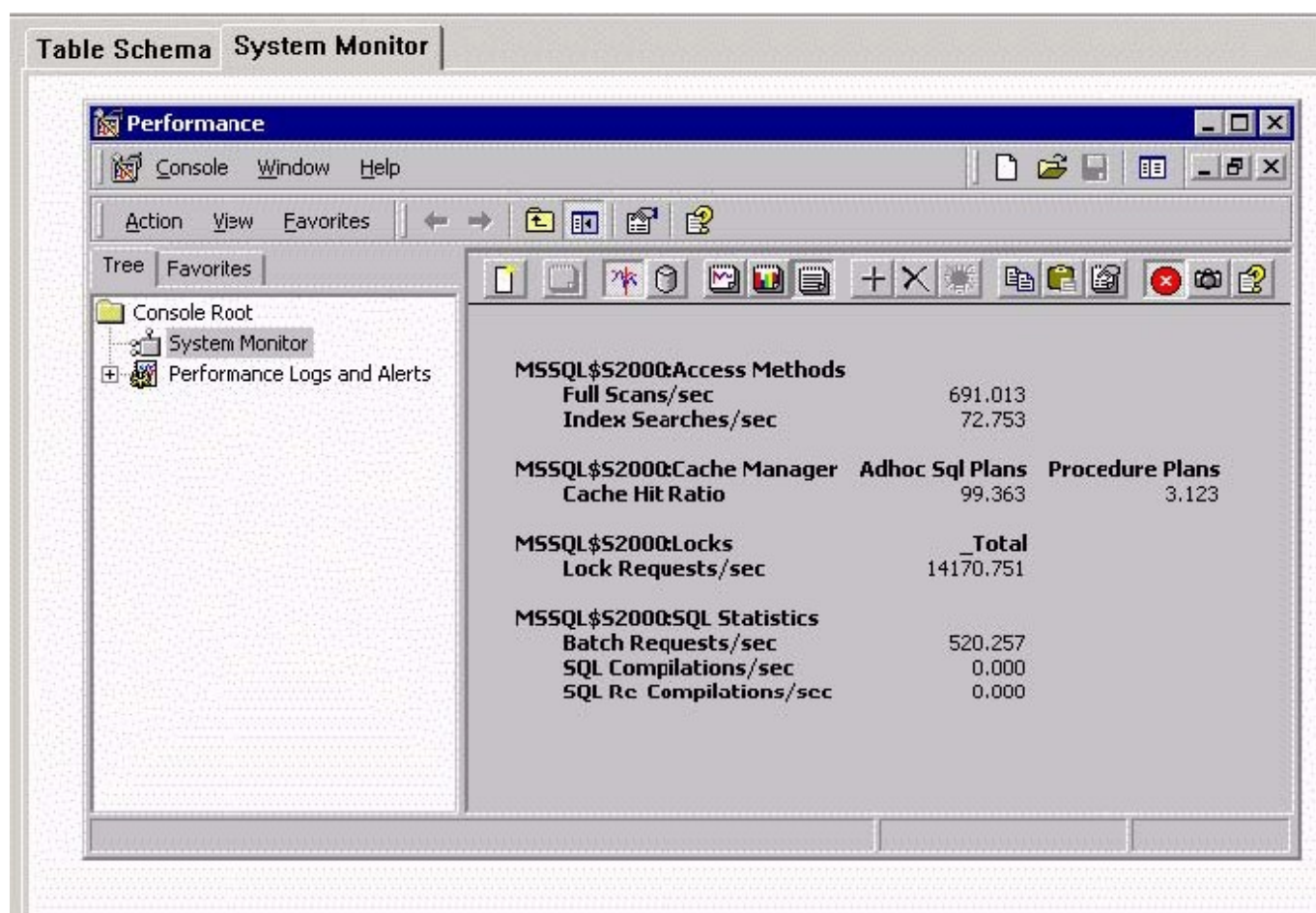
15. You are the administrator of a SQL Server 2000 computer. You configure a set of alerts on the server to notify you whenever certain operations fail or encounter errors. The notifications are sent to your Microsoft Windows 2000 Professional computer by using the net send command. You successfully test the alerts. After several days, however, you stop receiving notifications when operations fail or encounter an error. You verify that the SQLServerAgent service is started. You need to make sure that you continue to receive alert notifications. What should you do?

- A. Stop and restart the SQLServerAgent service.
- B. Clear the application log on the SQL Server computer.
- C. Clear the system log on your Windows 2000 Professional computer.
- D. Install the SQL Server 2000 administrative tools on your Windows 2000 Professional computer.

Answer: B

16. You are the administrator of a SQL Server 2000 computer. Your company modifies a sales application it uses so that it can access data from a SQL Server database rather than a Microsoft Access database. You configure the new SQL Server database. The tables are configured as shown in the Table Schema exhibit. (Click the Exhibit button.) Users report that queries to this database respond slowly. You use System Monitor to analyze database activity and receive the results shown in the System Monitor exhibit. (Click the Exhibit button.) You need to modify the database to accelerate query response time. What should you do?

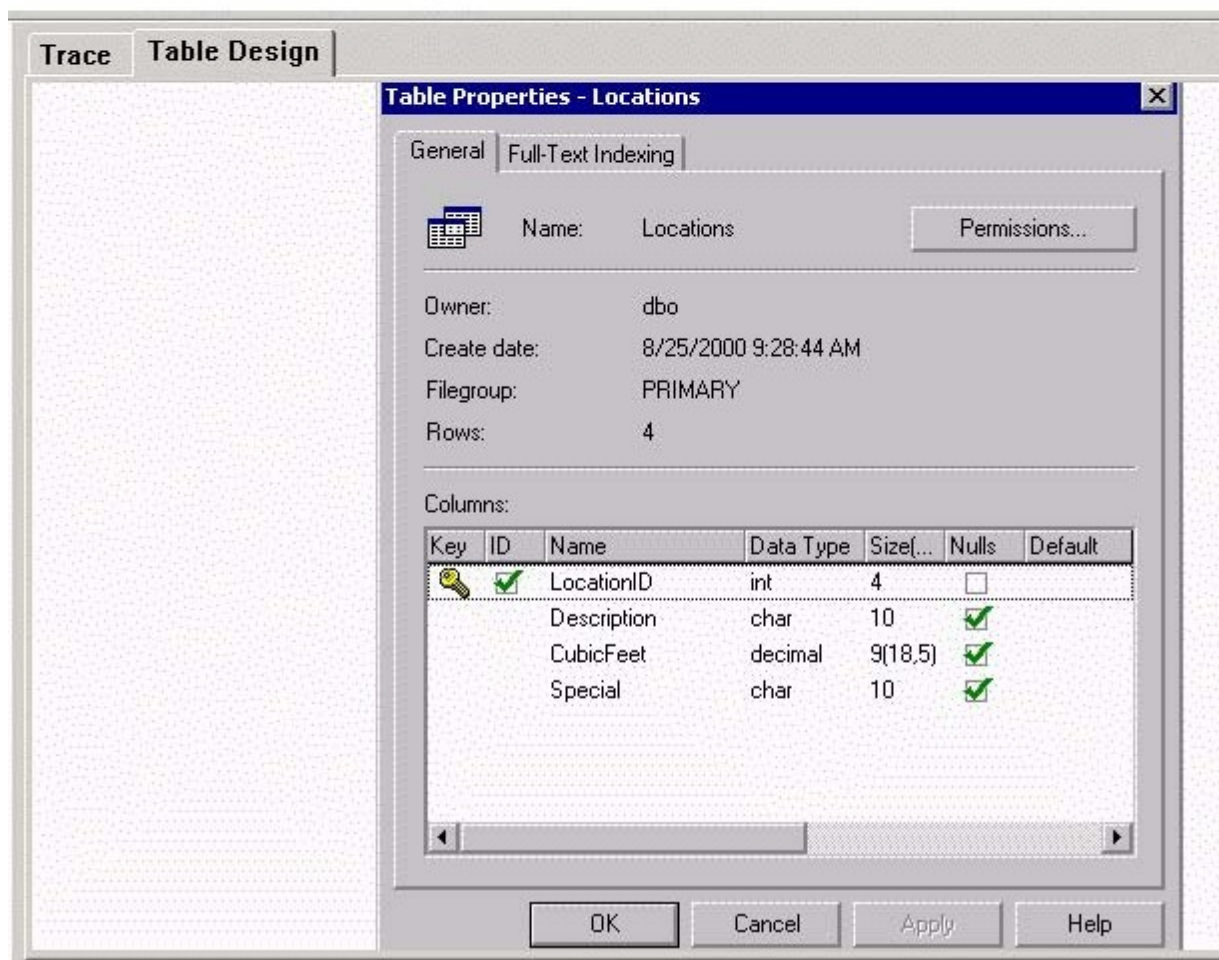
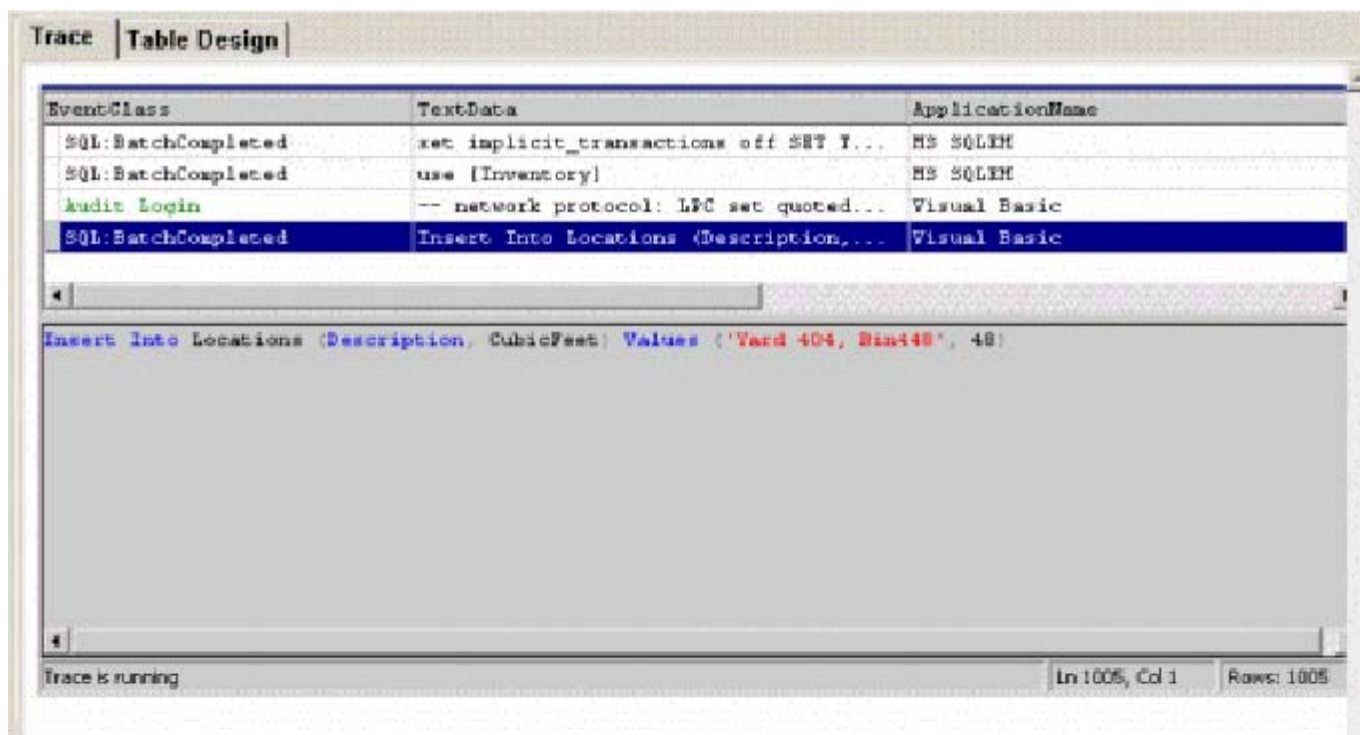
Table Schema		System Monitor																																																																															
<table border="1"> <thead> <tr> <th colspan="2">Customers</th> </tr> </thead> <tbody> <tr><td><input type="checkbox"/></td><td>CustomerID</td></tr> <tr><td><input type="checkbox"/></td><td>CompanyName</td></tr> <tr><td><input type="checkbox"/></td><td>ContactName</td></tr> <tr><td><input type="checkbox"/></td><td>ContactTitle</td></tr> <tr><td><input type="checkbox"/></td><td>Address</td></tr> <tr><td><input type="checkbox"/></td><td>City</td></tr> <tr><td><input type="checkbox"/></td><td>Region</td></tr> <tr><td><input type="checkbox"/></td><td>PostalCode</td></tr> <tr><td><input type="checkbox"/></td><td>Country</td></tr> <tr><td><input type="checkbox"/></td><td>Phone</td></tr> <tr><td><input type="checkbox"/></td><td>Fax</td></tr> </tbody> </table>		Customers		<input type="checkbox"/>	CustomerID	<input type="checkbox"/>	CompanyName	<input type="checkbox"/>	ContactName	<input type="checkbox"/>	ContactTitle	<input type="checkbox"/>	Address	<input type="checkbox"/>	City	<input type="checkbox"/>	Region	<input type="checkbox"/>	PostalCode	<input type="checkbox"/>	Country	<input type="checkbox"/>	Phone	<input type="checkbox"/>	Fax	<table border="1"> <thead> <tr> <th colspan="2">Orders</th> </tr> </thead> <tbody> <tr><td><input type="checkbox"/></td><td>OrderID</td></tr> <tr><td><input type="checkbox"/></td><td>CustomerID</td></tr> <tr><td><input type="checkbox"/></td><td>EmployeeID</td></tr> <tr><td><input type="checkbox"/></td><td>OrderDate</td></tr> <tr><td><input type="checkbox"/></td><td>RequiredDate</td></tr> <tr><td><input type="checkbox"/></td><td>ShippedDate</td></tr> <tr><td><input type="checkbox"/></td><td>ShipVia</td></tr> <tr><td><input type="checkbox"/></td><td>Freight</td></tr> <tr><td><input type="checkbox"/></td><td>ShipName</td></tr> <tr><td><input type="checkbox"/></td><td>ShipAddress</td></tr> <tr><td><input type="checkbox"/></td><td>ShipCity</td></tr> <tr><td><input type="checkbox"/></td><td>ShipRegion</td></tr> </tbody> </table>		Orders		<input type="checkbox"/>	OrderID	<input type="checkbox"/>	CustomerID	<input type="checkbox"/>	EmployeeID	<input type="checkbox"/>	OrderDate	<input type="checkbox"/>	RequiredDate	<input type="checkbox"/>	ShippedDate	<input type="checkbox"/>	ShipVia	<input type="checkbox"/>	Freight	<input type="checkbox"/>	ShipName	<input type="checkbox"/>	ShipAddress	<input type="checkbox"/>	ShipCity	<input type="checkbox"/>	ShipRegion	<table border="1"> <thead> <tr> <th colspan="2">Employees</th> </tr> </thead> <tbody> <tr><td><input type="checkbox"/></td><td>EmployeeID</td></tr> <tr><td><input type="checkbox"/></td><td>LastName</td></tr> <tr><td><input type="checkbox"/></td><td>FirstName</td></tr> <tr><td><input type="checkbox"/></td><td>Title</td></tr> <tr><td><input type="checkbox"/></td><td>TitleOfCourtesy</td></tr> <tr><td><input type="checkbox"/></td><td>BirthDate</td></tr> <tr><td><input type="checkbox"/></td><td>HireDate</td></tr> <tr><td><input type="checkbox"/></td><td>Address</td></tr> <tr><td><input type="checkbox"/></td><td>City</td></tr> <tr><td><input type="checkbox"/></td><td>Region</td></tr> <tr><td><input type="checkbox"/></td><td>PostalCode</td></tr> <tr><td><input type="checkbox"/></td><td>Country</td></tr> </tbody> </table>		Employees		<input type="checkbox"/>	EmployeeID	<input type="checkbox"/>	LastName	<input type="checkbox"/>	FirstName	<input type="checkbox"/>	Title	<input type="checkbox"/>	TitleOfCourtesy	<input type="checkbox"/>	BirthDate	<input type="checkbox"/>	HireDate	<input type="checkbox"/>	Address	<input type="checkbox"/>	City	<input type="checkbox"/>	Region	<input type="checkbox"/>	PostalCode	<input type="checkbox"/>	Country
Customers																																																																																	
<input type="checkbox"/>	CustomerID																																																																																
<input type="checkbox"/>	CompanyName																																																																																
<input type="checkbox"/>	ContactName																																																																																
<input type="checkbox"/>	ContactTitle																																																																																
<input type="checkbox"/>	Address																																																																																
<input type="checkbox"/>	City																																																																																
<input type="checkbox"/>	Region																																																																																
<input type="checkbox"/>	PostalCode																																																																																
<input type="checkbox"/>	Country																																																																																
<input type="checkbox"/>	Phone																																																																																
<input type="checkbox"/>	Fax																																																																																
Orders																																																																																	
<input type="checkbox"/>	OrderID																																																																																
<input type="checkbox"/>	CustomerID																																																																																
<input type="checkbox"/>	EmployeeID																																																																																
<input type="checkbox"/>	OrderDate																																																																																
<input type="checkbox"/>	RequiredDate																																																																																
<input type="checkbox"/>	ShippedDate																																																																																
<input type="checkbox"/>	ShipVia																																																																																
<input type="checkbox"/>	Freight																																																																																
<input type="checkbox"/>	ShipName																																																																																
<input type="checkbox"/>	ShipAddress																																																																																
<input type="checkbox"/>	ShipCity																																																																																
<input type="checkbox"/>	ShipRegion																																																																																
Employees																																																																																	
<input type="checkbox"/>	EmployeeID																																																																																
<input type="checkbox"/>	LastName																																																																																
<input type="checkbox"/>	FirstName																																																																																
<input type="checkbox"/>	Title																																																																																
<input type="checkbox"/>	TitleOfCourtesy																																																																																
<input type="checkbox"/>	BirthDate																																																																																
<input type="checkbox"/>	HireDate																																																																																
<input type="checkbox"/>	Address																																																																																
<input type="checkbox"/>	City																																																																																
<input type="checkbox"/>	Region																																																																																
<input type="checkbox"/>	PostalCode																																																																																
<input type="checkbox"/>	Country																																																																																
<table border="1"> <thead> <tr> <th colspan="2">Suppliers</th> </tr> </thead> <tbody> <tr><td><input type="checkbox"/></td><td>SupplierID</td></tr> <tr><td><input type="checkbox"/></td><td>CompanyName</td></tr> <tr><td><input type="checkbox"/></td><td>ContactName</td></tr> <tr><td><input type="checkbox"/></td><td>ContactTitle</td></tr> <tr><td><input type="checkbox"/></td><td>Address</td></tr> <tr><td><input type="checkbox"/></td><td>City</td></tr> <tr><td><input type="checkbox"/></td><td>Region</td></tr> <tr><td><input type="checkbox"/></td><td>PostalCode</td></tr> <tr><td><input type="checkbox"/></td><td>Country</td></tr> <tr><td><input type="checkbox"/></td><td>Phone</td></tr> <tr><td><input type="checkbox"/></td><td>Fax</td></tr> <tr><td><input type="checkbox"/></td><td>HomePage</td></tr> </tbody> </table>		Suppliers		<input type="checkbox"/>	SupplierID	<input type="checkbox"/>	CompanyName	<input type="checkbox"/>	ContactName	<input type="checkbox"/>	ContactTitle	<input type="checkbox"/>	Address	<input type="checkbox"/>	City	<input type="checkbox"/>	Region	<input type="checkbox"/>	PostalCode	<input type="checkbox"/>	Country	<input type="checkbox"/>	Phone	<input type="checkbox"/>	Fax	<input type="checkbox"/>	HomePage	<table border="1"> <thead> <tr> <th colspan="2">Products</th> </tr> </thead> <tbody> <tr><td><input type="checkbox"/></td><td>ProductID</td></tr> <tr><td><input type="checkbox"/></td><td>ProductName</td></tr> <tr><td><input type="checkbox"/></td><td>SupplierID</td></tr> <tr><td><input type="checkbox"/></td><td>CategoryID</td></tr> <tr><td><input type="checkbox"/></td><td>QuantityPerUnit</td></tr> <tr><td><input type="checkbox"/></td><td>UnitPrice</td></tr> <tr><td><input type="checkbox"/></td><td>UnitsInStock</td></tr> <tr><td><input type="checkbox"/></td><td>UnitsOnOrder</td></tr> <tr><td><input type="checkbox"/></td><td>ReorderLevel</td></tr> <tr><td><input type="checkbox"/></td><td>Discontinued</td></tr> </tbody> </table>		Products		<input type="checkbox"/>	ProductID	<input type="checkbox"/>	ProductName	<input type="checkbox"/>	SupplierID	<input type="checkbox"/>	CategoryID	<input type="checkbox"/>	QuantityPerUnit	<input type="checkbox"/>	UnitPrice	<input type="checkbox"/>	UnitsInStock	<input type="checkbox"/>	UnitsOnOrder	<input type="checkbox"/>	ReorderLevel	<input type="checkbox"/>	Discontinued	<table border="1"> <thead> <tr> <th colspan="2">Order Details</th> </tr> </thead> <tbody> <tr><td><input type="checkbox"/></td><td>OrderID</td></tr> <tr><td><input type="checkbox"/></td><td>ProductID</td></tr> <tr><td><input type="checkbox"/></td><td>UnitPrice</td></tr> <tr><td><input type="checkbox"/></td><td>Quantity</td></tr> <tr><td><input type="checkbox"/></td><td>Discount</td></tr> </tbody> </table>		Order Details		<input type="checkbox"/>	OrderID	<input type="checkbox"/>	ProductID	<input type="checkbox"/>	UnitPrice	<input type="checkbox"/>	Quantity	<input type="checkbox"/>	Discount																
Suppliers																																																																																	
<input type="checkbox"/>	SupplierID																																																																																
<input type="checkbox"/>	CompanyName																																																																																
<input type="checkbox"/>	ContactName																																																																																
<input type="checkbox"/>	ContactTitle																																																																																
<input type="checkbox"/>	Address																																																																																
<input type="checkbox"/>	City																																																																																
<input type="checkbox"/>	Region																																																																																
<input type="checkbox"/>	PostalCode																																																																																
<input type="checkbox"/>	Country																																																																																
<input type="checkbox"/>	Phone																																																																																
<input type="checkbox"/>	Fax																																																																																
<input type="checkbox"/>	HomePage																																																																																
Products																																																																																	
<input type="checkbox"/>	ProductID																																																																																
<input type="checkbox"/>	ProductName																																																																																
<input type="checkbox"/>	SupplierID																																																																																
<input type="checkbox"/>	CategoryID																																																																																
<input type="checkbox"/>	QuantityPerUnit																																																																																
<input type="checkbox"/>	UnitPrice																																																																																
<input type="checkbox"/>	UnitsInStock																																																																																
<input type="checkbox"/>	UnitsOnOrder																																																																																
<input type="checkbox"/>	ReorderLevel																																																																																
<input type="checkbox"/>	Discontinued																																																																																
Order Details																																																																																	
<input type="checkbox"/>	OrderID																																																																																
<input type="checkbox"/>	ProductID																																																																																
<input type="checkbox"/>	UnitPrice																																																																																
<input type="checkbox"/>	Quantity																																																																																
<input type="checkbox"/>	Discount																																																																																
		<table border="1"> <thead> <tr> <th colspan="2">Categories</th> </tr> </thead> <tbody> <tr><td><input type="checkbox"/></td><td>CategoryID</td></tr> <tr><td><input type="checkbox"/></td><td>CategoryName</td></tr> <tr><td><input type="checkbox"/></td><td>Description</td></tr> <tr><td><input type="checkbox"/></td><td>Picture</td></tr> </tbody> </table>		Categories		<input type="checkbox"/>	CategoryID	<input type="checkbox"/>	CategoryName	<input type="checkbox"/>	Description	<input type="checkbox"/>	Picture																																																																				
Categories																																																																																	
<input type="checkbox"/>	CategoryID																																																																																
<input type="checkbox"/>	CategoryName																																																																																
<input type="checkbox"/>	Description																																																																																
<input type="checkbox"/>	Picture																																																																																



- A. Place primary keys and foreign key indexes on the tables.
- B. Remove all indexes from the tables.
- C. Replace the table joins with correlated subqueries.
- D. Use server-side cursors to retrieve data.

Answer: A

17. You are the administrator of a SQL Server 2000 computer. The server contains a database named Inventory. Developers at your company upgrade an inventory-tracking application. Users report that when they insert new information in the Locations table, the upgraded application returns the following error message: "String or binary data would be truncated. The statement has been terminated." When you use SQL Profiler to trace the activity of the application, you receive the results shown in the Trace exhibit. (Click the Exhibit button.) You examine the design of the Locations table as shown in the Table Design exhibit. (Click the Exhibit button.) You need to configure the database to support both versions of the application without affecting server performance. What should you do?



A. Alter the data type of the Description field to varchar(50).



B. Alter the data type of the Special field to varchar(50).

C. Alter the data type of the CubicFeet field to float.

D. In the Locations table, create an INSTEAD OF trigger that truncates the Description field at 10 characters when the record is updated.

E. In the Locations table, create an INSTEAD OF trigger that truncates the Special field at 10 characters when the record is updated.

Answer: A

18. You are the administrator of a SQL Server 2000 computer. Each night, you need to send a copy of the server's msdb database in an e-mail message to the administrator of another SQL Server computer. You create a job that contains the following steps. Detach the msdb database. Send the database to the administrator in an e-mail message. Reattach the msdb database. You test the job, and it fails on the first step. You need to ensure that the msdb database is mailed to the administrator every night. What should you do?

A. Ensure that the SQLServerAgent service is running under a user account that has database owner access to the msdb database.

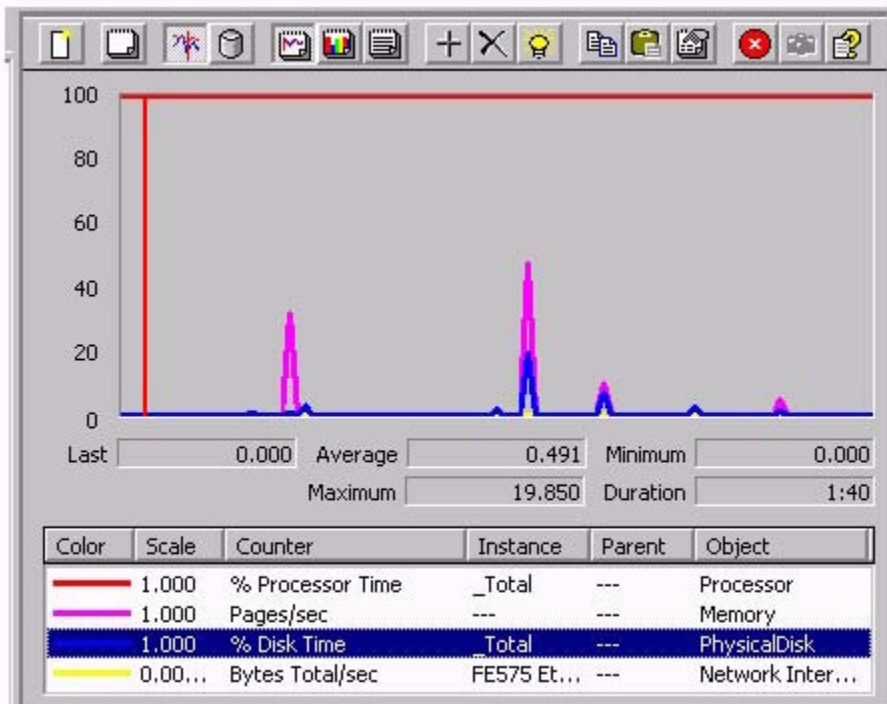
B. Delete the first and last steps in the job.

C. Configure the job to back up the msdb database to a temporary file. Send the file to the administrator in an e-mail message.

D. Insert a new job step before the first step. Configure the new step to terminate all processes that use the msdb database.

Answer: C

19. You are the administrator of a SQL Server 2000 computer that contains a database. Users report that queries to this database respond slowly. You use System Monitor to examine the subsystems on your server and receive the results shown in the exhibit. (Click the Exhibit button.) You need to modify the server to accelerate query response time. What should you do?



- A. Increase the amount of RAM.
- B. Upgrade to a faster disk subsystem.
- C. Add a faster network adapter.
- D. Add an additional processor.

Answer: D

20. You are the administrator of a SQL Server 2000 computer. The server contains two databases. A client/server application accesses one of the databases. A different client/server application accesses the other database. Each application uses several stored procedures to query and update its database. Users report that both applications respond slowly. You use SQL Profiler to monitor activity on the server. You receive results of the trace as shown in the following screen shot. You need to improve the performance of the applications. What should you do?

EventClass	TextData
SQL:BatchCompleted	IF @@TRANCOUNT > 0 COMMIT TRAN
SQL:BatchCompleted	Update Customers Set CustomerZip = ...
SQL:BatchCompleted	Update Products Set SKU = '23232323...
SQL:BatchCompleted	IF @@TRANCOUNT > 0 COMMIT TRAN
SQL:BatchCompleted	Update Customers Set CustomerZip = ...
Update Products Set SKU = '23232323' Where ProductID = 1	

- A. Modify the applications so that they use views to query data.
- B. Modify the stored procedures so that they select data into temporary tables.
- C. Re-create the stored procedures so that they do not contain the WITH RECOMPILE option.
- D. Disable the Auto update statistics option in both databases.

Answer: B

This document was created with Win2PDF available at <http://www.win2pdf.com>.  
The unregistered version of Win2PDF is for evaluation or non-commercial use only.  
This page will not be added after purchasing Win2PDF.