

T estpassport Q&A



La meilleure qualité le meilleur service

<http://www.testpassport.fr>

Service de mise à jour gratuit pendant un an

Exam : **70-497**

Title : Software Testing with Visual
Studio 2012

Version : DEMO

1.You are using Microsoft Visual Studio 2012.

A requirement has been removed and you need to update the five corresponding test cases to reflect this by changing their state.

You need to simultaneously update the state of these five test cases.

What are two possible ways to accomplish this goal? (Each correct answer presents a complete solution. Choose two.)

A. In Team Explorer, run a query that returns the five test cases. In the Results pane, highlight all five test cases and click Refresh.

B. In MTM, run a query that returns the five test cases. In the Results pane, highlight all five test cases and click Run.

C. Navigate to Web Access, run the query that returns the five test cases, select the five test cases, and edit selected work items.

D. In Microsoft Excel, open a query that returns the five test cases. Update the State field of all of the work items. Click Publish.

E. In Team Explorer, run a query that returns the five test cases. In the Results pane, update the state and save each test case.

Answer: C, D

Explanation:

* In Team Explorer, we can query the work item databases by using a new query language Microsoft provides: Work Item Query Language (WIQL), which has a SQL-like construct.

From Team Explorer or Web Access we can create new queries or modify existing ones.

* You can make bulk updates to many work items at a time by using Team Web Access, Office Excel, or Office Project.

2.You are using Microsoft Test Manager (MTM). You are using the Microsoft Solution Framework (MSF) for Agile Software Development process template. Your team has all required permissions to run the reports on the SharePoint project portal.

You need to track the progress on resolving bugs by your team for the past week.

Which Excel report should you run?

A. Bug Trends

B. Bugs by Assignment

C. Run the Team Trend report.

D. Bug Progress

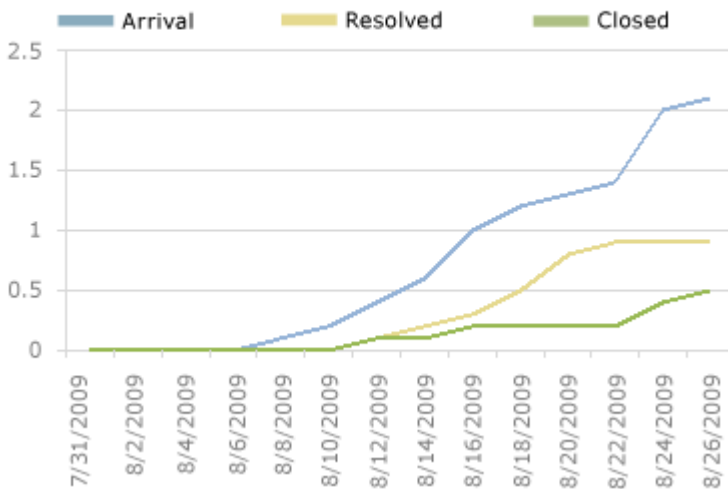
Answer: A

Explanation:

You can use the Bug Trends report in Office Excel to track the rate at which the team is discovering, resolving, and closing Bugs. This report shows a moving average of Bugs that the team has discovered and resolved over time.

Example:

7-Day Bug Trend Rates



3. You are using Microsoft Test Manager (MTM) to manage your testing efforts.

You plan to use the Recommended tests feature to assist in identifying tests to run against a Windows Presentation Foundation rich client application. When you select a new build, no recommended tests are displayed.

You need to configure the data collectors to enable the feature.

Which data collector should you configure?

- A. Action Log
- B. Test Impact
- C. IntelliTrace
- D. ASP.NET Client Proxy for IntelliTrace and Test Impact

Answer: B

Explanation:

To find the recommended tests, you must first run your manual tests using Test Runner or run your automated tests. When you run these tests, you have to use test settings that collect the test impact data. This test impact data contains information about which methods are called when you run your tests.

Reference: Visual Studio 2013, Which tests should be run since a previous build

4. You are using Microsoft Test Manager (MTM) to perform exploratory testing.

You need to insert an image into the comment area for the test run.

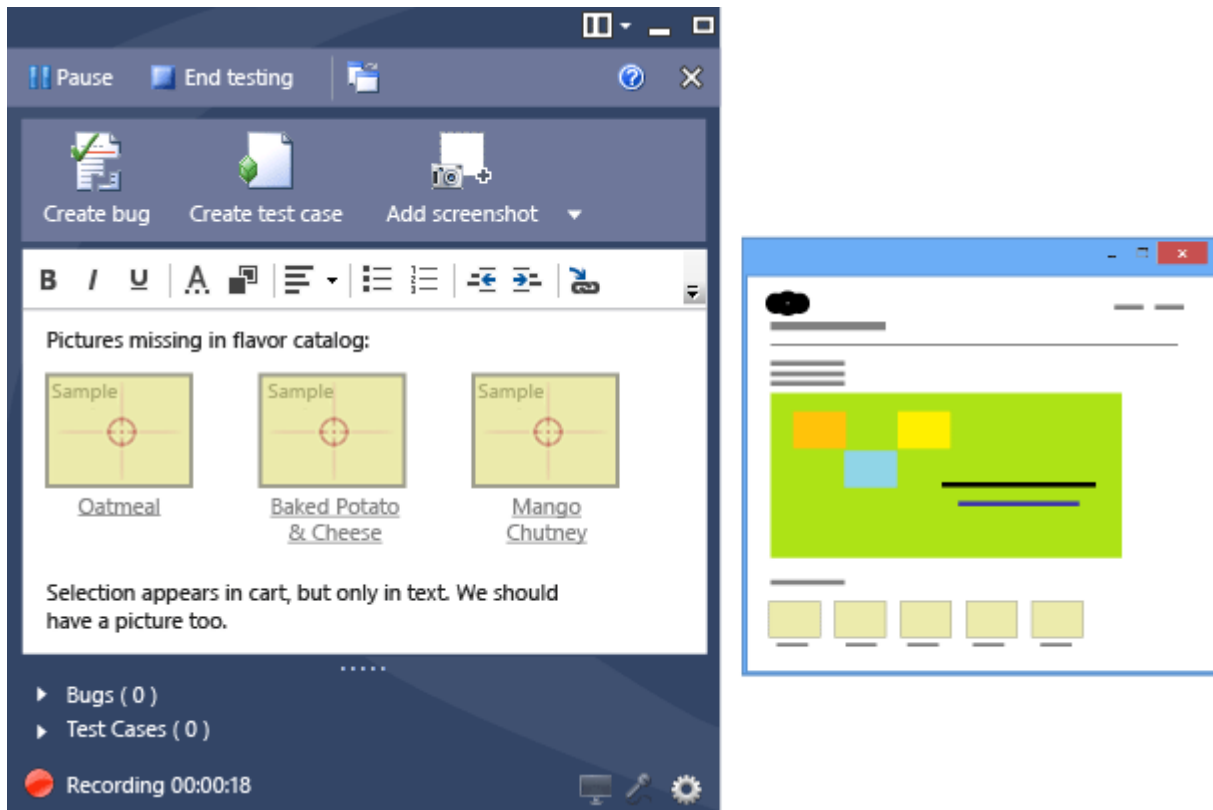
What are two possible ways to accomplish this goal? (Each correct answer presents a complete solution. Choose two.)

- A. Use the Add screenshot tool in the exploratory test runner and drag the selection box over the area of the screen you want to capture.
- B. Capture the image you want to insert by using your favorite screen capture utility and paste the image into the comment area of the exploratory testing window.
- C. Capture the image you want to insert by using your favorite screen capture utility and save the file to disk. Add the image as an attachment to the test run.
- D. Capture the image you want to insert by using your favorite screen capture utility. Drag and drop the file onto the comment area from the Windows Explorer.

Answer: A, C

Explanation:

A: While you work with the application, add comments and screenshots in the Test Runner window.



C: * Microsoft Test Manager (MTM) helps you by recording the actions you perform as you work with your application. You can also record screenshots, comments, file attachments, audio narration and screen video.

5. You are running a manual test using Microsoft Test Manager (MTM). You have chosen to create an action recording.

You want to pause the test run and exit the test runner.

Before you exit the test runner, you need to mark the test case as being in progress.

Which action should you perform in the test runner?

- A. Close
- B. Return to Testing Center
- C. Save
- D. Save and Close

Answer: B

Explanation:

I am running manual test using Test Runner. In here, I can pause the test and return to Testing Center. However, after I have done my work in Testing Center, how do I resume my test?

A) There is discoverability issue around here and many folks have stumbled on this. You can use the button highlighted below to go back to Test Runner.

