

T estpassport Q&A



La meilleure qualité le meilleur service

<http://www.testpassport.fr>

Service de mise à jour gratuit pendant un an

Exam : **E20-591**

Title : Backup and Recovery
Solutions Exam for
Technology Architects

Version : DEMO

1.An administrator wants to back up an EMC Celerra with Avamar using a single NDMP accelerator node. Based on EMC best practices, what is the maximum number of files that can be backed up per backup job?

- A. 5 million
- B. 10 million
- C. 15 million
- D. 20 million

Answer: B

2.Which EMC NetWorker feature is used to perform a backup based on an event?

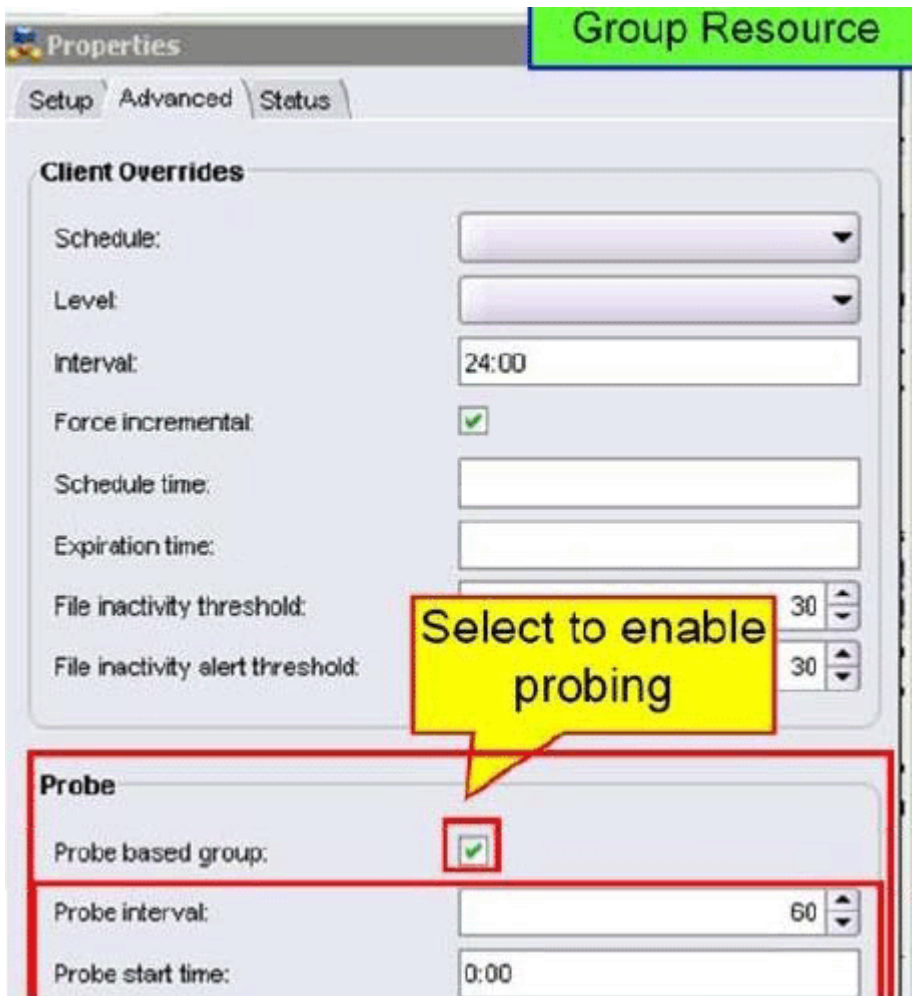
- A. Application modules
- B. Directives
- C. Scheduled backups
- D. Probe-based backups

Answer: D

Explanation:

Probe-based Group Backups

- Event-driven backups
- Backup of the group is performed based on the result of executing user-created client *probes*
- A *probe* is a user-created program/script configured to run on clients in a probe-enabled group
 - The success (exit 0) of the probe triggers the backup
 - **Probe Interval** determines how often probing occurs (minutes)
 - **Probe Start** and **End** times define the probing window when client probing occurs



3. Where is deduplicated data stored on a Data Domain system?

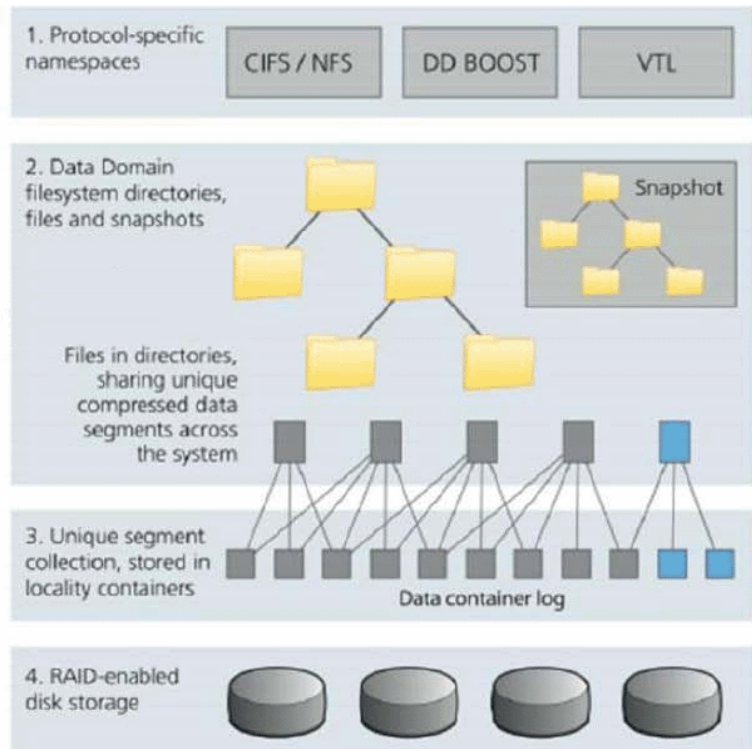
- A. SATA drives
- B. NVRAM
- C. SCSI drives
- D. PATA drives

Answer: A

Explanation:

Data Domain Logical and Physical System Layers

- Protocol Namespaces:
 - Provide external interface to applications
- File System
- Unique Segment Collection:
 - Segments of data
 - Deduplicated
 - Stored in collection containers
- RAID 6 disk:
 - Stores collection containers
 - SATA drives



4. You are asked to propose a serverless backup solution for the following environment:

- Oracle database running on HP
- UX 11i and all datafiles reside on an EMC Symmetrix disk array.
- EMC TimeFinder/Mirror is used to create a copy of the Oracle data.
- Mirror copy of the Oracle data is backed up by a Sun Solaris 10 server.

Which EMC product would you recommend to support this environment?

- A. RecoverPoint
- B. Avamar
- C. Data Domain
- D. NetWorker

Answer: C

5. An EMC customer has an EMC NetWorker server running on a Microsoft Windows host and two storage nodes running on Solaris hosts. Data Protection Advisor (DPA) will be installed on a separate Windows host. The customer requires that system performance information be collected from the backup server and all storage nodes. A Collector will be installed on the DPA server by default.

At a minimum, how many additional Collectors need to be deployed?

- A. 0
- B. 1
- C. 2
- D. 3

Answer: C

