

T estpassport Q&A



La meilleure qualité le meilleur service

<http://www.testpassport.fr>

Service de mise à jour gratuit pendant un an

Exam : **IBMSPPSSMBPDM**

Title : IBM SPSS Modeler
Business Partner Data
Mining Associate

Version : DEMO

1.How many phases are in the CRISP-DM Process Methodology?

- A.Four
- B.Five
- C.Six
- D.Seven

Answer: C

2.True or false: the CRISP-DM Process Methodology is a linear process.

- A.True
- B.False

Answer: B

3.Which node is used to read data from a comma delimited text file?

- A.Var.File
- B.Data Collection
- C.Fixed File
- D.Statistics File

Answer: A

4.Examine the Data Audit output shown below.

Field	Measurement	Outliers	Extremes	Action	Impute Mi...	Method	% Complete	Valid
ACCOM	Nominal	--	--		Never	Fixed	100	
COUNTRY	Nominal	--	--		Never	Fixed	100	
CUSTID	Nominal	--	--		Never	Fixed	100	
DIST_TO_BE...	Continuous	1	0	None	Never	Fixed	100	
DOB	Nominal	--	--		Never	Fixed	100	
GENDER	Nominal	--	--		Never	Fixed	98.681	
HOLCODE	Nominal	--	--		Never	Fixed	100	
HOLCOST	Continuous	9	1	Discard	Never	Fixed	97.889	
NAME	Nominal	--	--		Never	Fixed	100	
NIGHTS	Continuous	0	0	Nullify	Never	Fixed	100	
NUMPARTY	Continuous	6	0	None	Never	Fixed	100	
POOL	Flag	--	--		Never	Fixed	100	
REGION	Nominal	--	--		Never	Fixed	100	
TRAVDATE	Nominal	--	--		Never	Fixed	100	

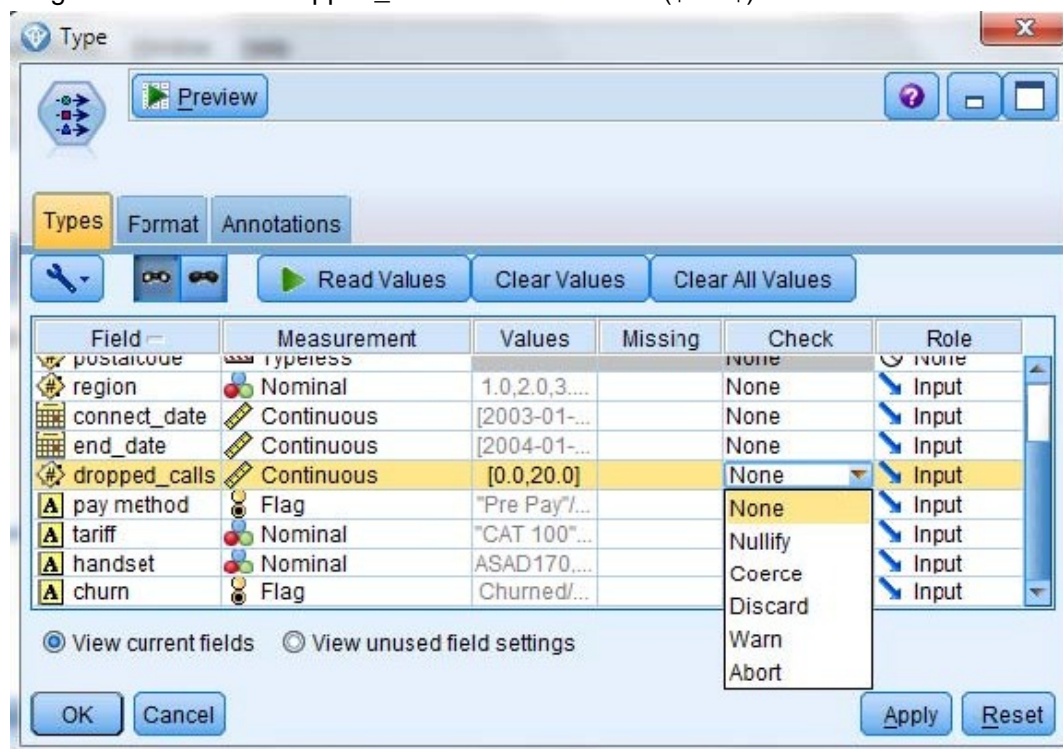
What action will occur in a generated Outlier & Extreme Supernode for HOLCOST?

- A.Nine records will be set to the system missing (null) value for HOLCOST.
- B.Ten records will be deleted.
- C.Ten records will be set to the system missing (null) value for HOLCOST.
- D.Nine records will be deleted.

Answer: B

5.Given the Type node shown below, what specifications are necessary to change all values outside the

range 1 to 15 in field dropped_calls to the undefined (\$null\$) value?



- A.Pass Values and Check action Nullify
- B.Specify Values Lower 1 and Upper 15 and Check action Nullify
- C.Specify Values Lower 1 and Upper 15 and Check action Discard
- D.Read Values and Check action Warn

Answer: B