

# T estpassport Q&A



---

*La meilleure qualité le meilleur service*

<http://www.testpassport.fr>

Service de mise à jour gratuit pendant un an

**Exam : SPS-200**

**Title : IBMSPSSMPRO: IBM  
SPSS Modeler Professional**

**Version : Demo**

1.Which key items must be identified before a data mining project is started? (Select all that apply)

- A. A business problem or question
- B. Data quality problem
- C. Available data
- D. Available expertise on the data and business

**Answer: B**

2.Given the following Output Table to create a select node which includes vehicles from both groups A and B, click on A and on B (as shown) and select from the menu. ?

	Policyholder age	Vehicle group	Vehicle age	Average cost of claims	Number of claims
1	17-20	A	0-3	259	8
2	17-20	A	4-7	282	8
3	17-20	A	8-9	133	4
4	17-20	A	10+	160	1
5	17-20	B	0-3	272	10
6	17-20	B	4-7	249	26
7	17-20	B	8-9	280	1
8	17-20	B	10+	11	1
9	17-20	C	0-3	199	9
10	17-20	C	4-7	288	13
11	17-20	C	8-9	179	1
12	17-20	C	10+	3005	0
13	17-20	D	0-3	763	3
14	17-20	D	4-7	880	2
15	17-20	D	8-9	3005	0
16	17-20	D	10+	3005	0
17	21-24	A	0-3	302	10
18	21-24	A	4-7	194	31
19	21-24	A	8-9	135	10
20	21-24	A	10+	105	4

A. Generate ...- Select Node "i" or n

B. Generate ...- Select Node "i" or A" d

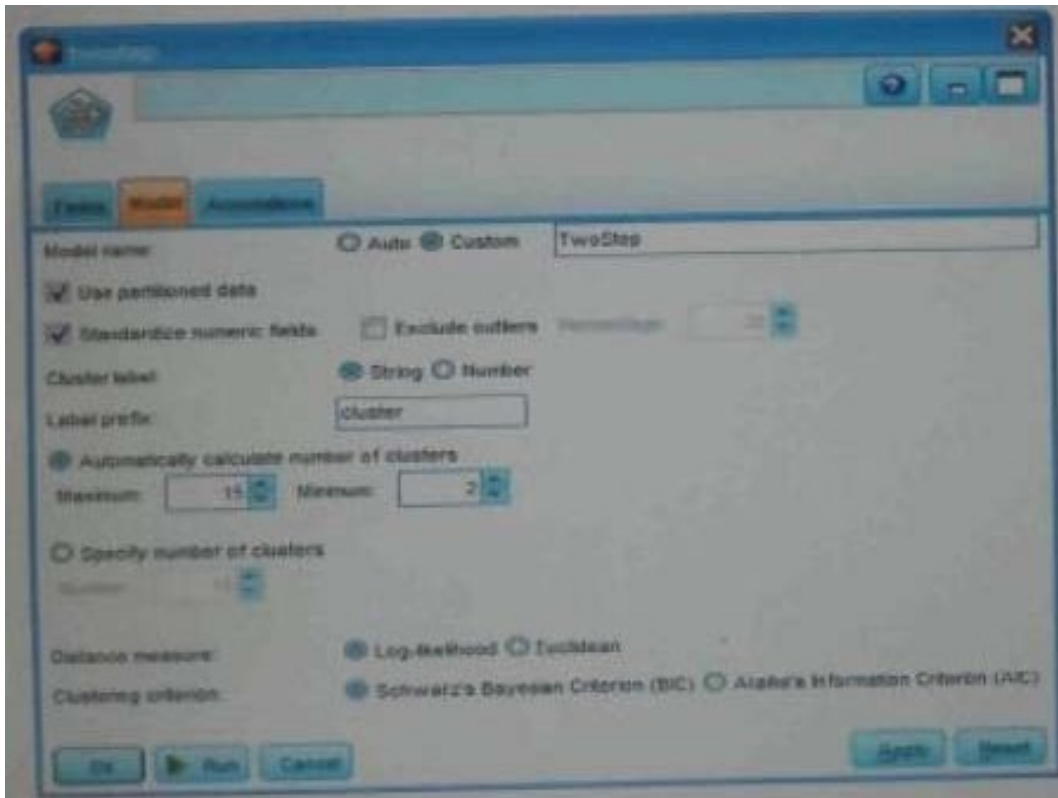
**Answer: B**

3.Which nodes are best suited for revealing relationship between categorical (nominal, ordinal) fields? (Select all that apply)

- A. Means node
- B. Matrix node
- C. Distribution node
- D. Table node

**Answer: A,C**

4.In two step node shown below, what does standardize numeric fields mean?



- A. Eliminate outliers to improve results.
- B. Transform the numeric fields to a scale with a mean of zero and variance of one.
- C. Limit the number of created clusters.
- D. Use only the numeric fields scale.

**Answer: B**

5.Which statement is correct regarding the sample node dialogue shown below?



- A. It will select every 60th record from the data.
- B. It will randomly select exactly 60% of all the record.
- C. It will select approximately 60% of the records. This is, each record will have a 60% probability of being selected.
- D. It will always draw the same 60% of records each time this sample node is run.

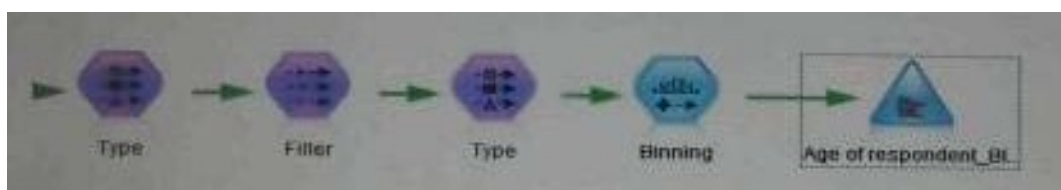
**Answer: C**

6. Which statements are true of the Feature Selection node? (Select all that apply)

- A. Input fields can be selected on the basis of importance.
- B. The Target fields can be either categorical or continuous measurement.
- C. The Input fields can only be continuous measurement.
- D. When a target field is not specified then it will create a generalized output.

**Answer: A,B**

7. What is the reason that the three nodes in the following figure have been colored purple?



- A. The purple nodes were pushed back to the database.
- B. IBM SPSS Modeler is running out of memory.

- C. The purple nodes will be executed later.
- D. There are multiple type nodes in a row.

**Answer: A**

8. On the PCA/Factor node when doing a Principle Component analysis without rotation, the values reported on the Component Matrix represents the correlation between each field and factor.

- A. True
- B. False

**Answer: B**

9. As a default, the Evaluation node provides a graph of the first category of your target field. To change the category, you need to modify which sector?



- A. User defined hit
- B. User defined score
- C. Include business rule
- D. Export results to file

**Answer: A**

10. Which Model nodes can have a categorical target field? (Select all that apply)

- A. Discriminant node
- B. Linear node
- C. Neural Net node
- D. C & R Tree node

**Answer: A,B**